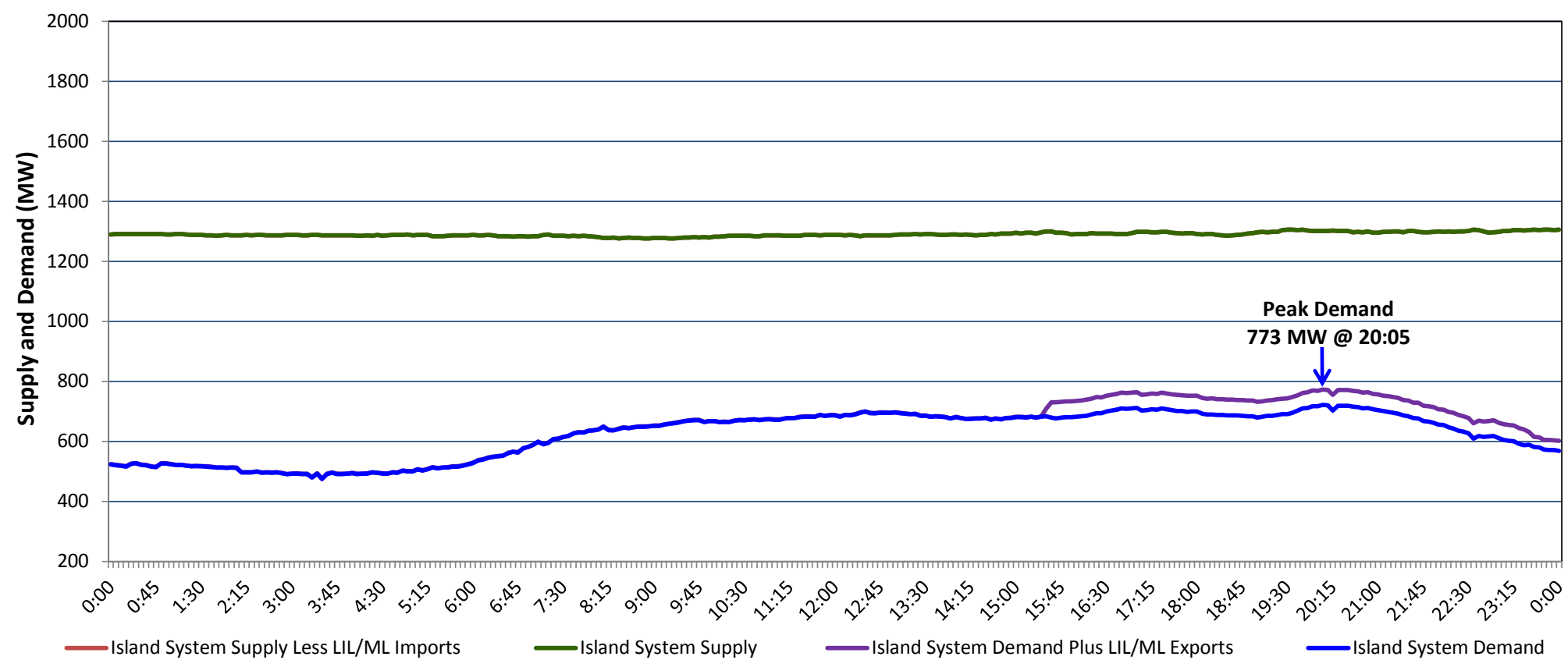


**Newfoundland Labrador Hydro (NLH)  
Supply and Demand Status Report Filed Wednesday, September 09, 2020**

**Section 1  
Island Interconnected System Supply, Demand & Exports  
Actual 24 Hour System Performance For Tuesday, September 08, 2020**



**Supply Notes For September 08, 2020**

- 1,2
- A As of 0853 hours, June 21, 2020, Holyrood Unit 3 available but not operating (150 MW).
  - B As of 0808 hours, July 15, 2020, Holyrood Unit 2 unavailable due to planned outage (170 MW).
  - C As of 1009 hours, August 23, 2020, Upper Salmon Unit unavailable due to planned outage (84 MW).
  - D As of 1811 hours, September 02, 2020, Holyrood Unit 1 available but not operating (170 MW).
  - E As of 1400 hours, September 07, 2020, Bay d'Espoir Unit 1 unavailable due to planned outage (76.5 MW).
  - F As of 1400 hours, September 07, 2020, Bay d'Espoir Unit 2 unavailable due to planned outage (76.5 MW).

**Section 2  
Island Interconnected Supply and Demand**

Wed, Sep 09, 2020	Island System Outlook <sup>3</sup>	Seven-Day Forecast	Temperature (°C)		Island System Daily Peak Demand (MW)	
			Morning	Evening	Forecast	Adjusted <sup>7</sup>
Available Island System Supply: <sup>5</sup>	1,280 MW	Wednesday, September 09, 2020	19	20	690	690
NLH Island Generation: <sup>4</sup>	965 MW	Thursday, September 10, 2020	16	15	735	735
NLH Island Power Purchases: <sup>6</sup>	95 MW	Friday, September 11, 2020	19	10	790	790
Other Island Generation:	220 MW	Saturday, September 12, 2020	9	11	745	745
ML/LIL Imports:	-	Sunday, September 13, 2020	11	13	730	730
Current St. John's Temperature & Windchill:	18 °C	Monday, September 14, 2020	16	18	675	675
7-Day Island Peak Demand Forecast:	790 MW	Tuesday, September 15, 2020	13	10	690	690

**Supply Notes For September 09, 2020**

- 3
- Notes:
1. Generation outages for running and corrective maintenance are included. These are not unusual for power system operations. They generally do not impact customer supply. The power system operators schedule outages to system equipment whenever possible to coincide with periods when customer demands are low and sufficient supply reserves are available. However, from time to time equipment outages are necessary and reserves may be impacted.
  2. Due to the Island system having no synchronous connections to the larger North American grid, when there is a sudden loss of large generating units there may be a requirement for some customer's load to be interrupted for short periods to bring generation output equal to customer demand. This automatic action of power system protection, referred to as under frequency load shedding (UFLS), is necessary to ensure the integrity and reliability of system equipment. Under frequency events have typically occurred 5 to 8 times per year on the Island Interconnected System and the resultant customer load interruptions are generally less than 30 minutes. With the activation of the Maritime Link frequency controller during the winter of 2018, UFLS events have occurred less frequently.
  3. As of 0800 Hours.
  4. Gross output including station service at Holyrood (24.5 MW) and improved NLH hydraulic output due to water levels (35 MW).
  5. Gross output from all Island sources (including Note 4).
  6. NLH Island Power Purchases include: CBPP Co-Gen, Nalcor Exploits, Rattle Brook, Star Lake, Wind Generation and capacity assistance (when applicable).
  7. Adjusted for curtailable load, market activities and the impact of voltage reduction when applicable.

**Section 3  
Island Peak Demand Information  
Previous Day Actual Peak and Current Day Forecast Peak**

Tue, Sep 08, 2020	Actual Island Peak Demand <sup>8</sup>	20:05	773 MW
Wed, Sep 09, 2020	Forecast Island Peak Demand		690 MW

- Notes: 8. Island Demand / LIL / ML Exports (where applicable) is supplied by NLH generation and purchases, plus generation owned and operated by Newfoundland Power and Corner Brook Pulp & Paper (Deer Lake Power, DLP).